

# Class G Fuses

## SLC Series

480/600 V ac • Time-Delay • 1/2-60 A



### Description

Littelfuse SLC fuses provide cost effective branch circuit protection. Fuse length varies to prevent over-fusing. Compact Class G fuses were the first fuse series to approach midget fuse dimensions and meet NEC® requirements for branch-circuit protection.

### Features/Benefits

- Branch circuit rated
- Current-limiting
- 100 kA interrupting rating
- 600 V ac rated 1/2-20 A

### Applications

- Branch circuit protection

### Specifications

<b>Voltage Ratings</b>	600 V ac (1/2 – 20 A) 480 V ac (25 – 60 A) 170 V dc (1/2 – 60 A)
<b>Interrupting Ratings</b>	AC: 100 kA rms symmetrical DC: 10 kA
<b>Ampere Range</b>	1/2 – 60 A
<b>Approvals</b>	Standard 248-5, Class G UL Listed (File: E81895) CSA Certified (File: LR29862) Federal Specification WF-1814 (QPL-W-F-1814)
<b>Environmental</b>	RoHS Compliant

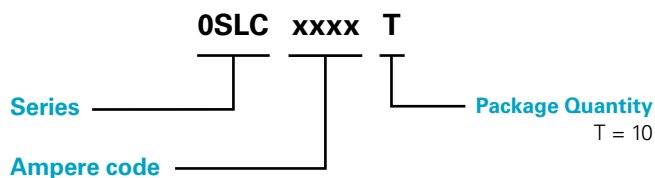
# Class G Fuses

## SLC Series

### Ordering Information

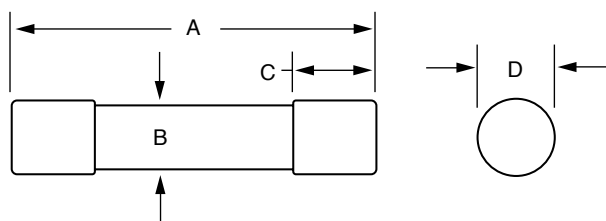
SERIES	AMP	PACKAGE QUANTITY	CATALOG NUMBER	ORDERING NUMBER
SLC	2	10	SLC002	0SLC002.T

### Part Numbering System



### Dimensions Inches (mm)

FERRULE VERSION



AMP	DIMENSIONS INCHES (mm)			
	A	B	C	D
1/2 – 15	1 5/16 (33.3)	3/8 (9.5)	3/8 (9.5)	13/32 (10.3)
20	1 13/32 (35.7)	3/8 (9.5)	3/8 (9.5)	13/32 (10.3)
25, 30	1 5/8 (41.3)	3/8 (9.5)	3/8 (9.5)	13/32 (10.3)
35 – 60	2 1/4 (57.2)	3/8 (9.5)	1/2 (12.7)	13/32 (10.3)

### Web Resources

Download TC Curves, CAD drawings and other technical information: [Littelfuse.com/SLC](https://www.littelfuse.com/SLC)

### Recommended Fuse Holders

LFG60 Series (1/2-20 A)

LFG48 Series (25-60 A)

**Disclaimer Notice** – Information furnished is believed to be accurate and reliable. However, users should independently evaluate the suitability of and test each product selected for their own applications. Littelfuse products are not designed for, and may not be used in, all applications. Read complete Disclaimer Notice at [www.littelfuse.com/product-disclaimer](https://www.littelfuse.com/product-disclaimer).