
Blade fuse holder pcb mount,10A,250VAC,5X20mm

The H3-10 pcb fuse holder consists of two separate socket terminals, which are made of brass and pre-assembled to a nylon base for 10 amp applications. Socket contacts hold the fuse firmly, ensuring good connections and low contact resistance.

Product features:

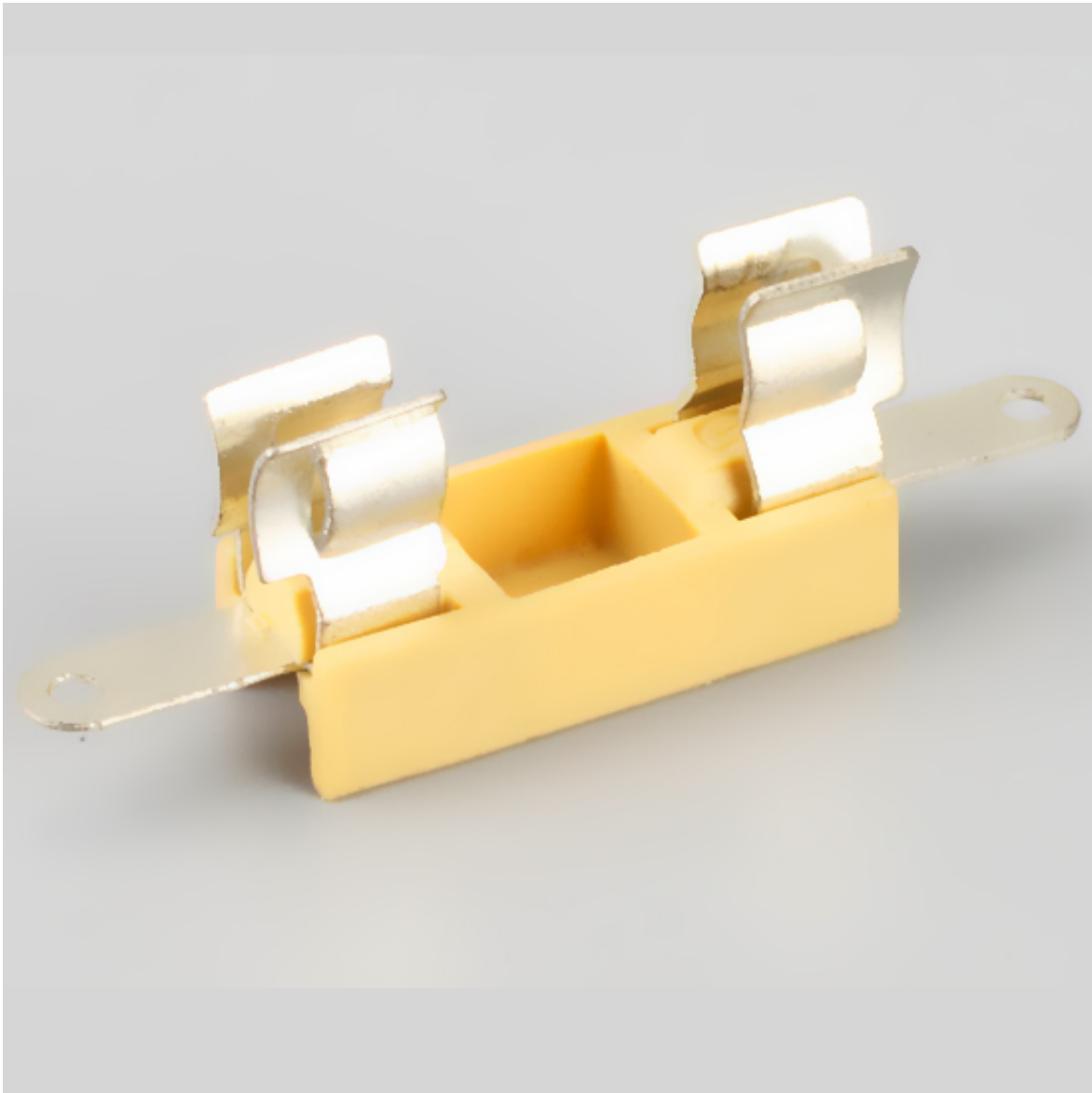
The bracket is equipped with tinned nickel plated brass contacts to protect and support the mounted fuse from shock and vibration

Current (ampere):10A

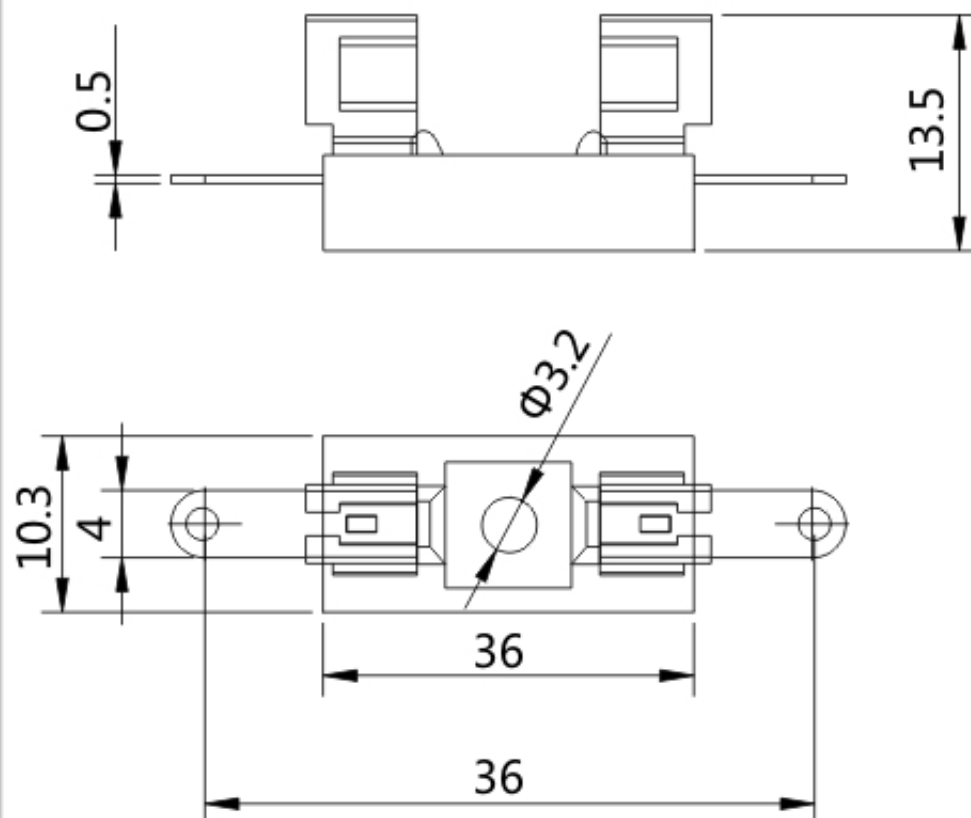
PCB applications can be mounted on the surface (SMT) and through hole (THM)

Moisture-proof and water-proof fuse holder, make sure your electrical connections are water-proof;

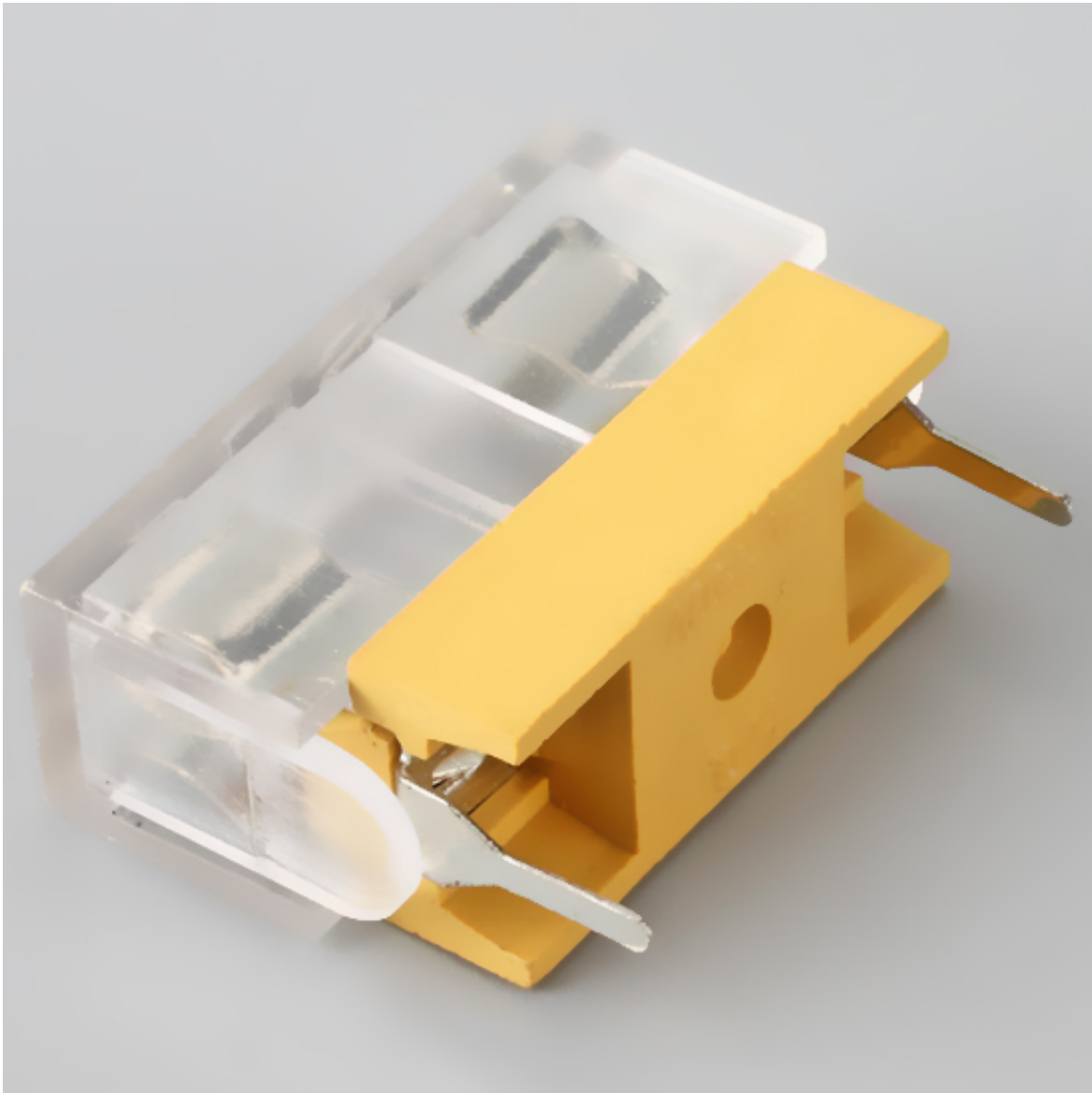
A



规格书Regulation book



B



规格书Regulation book

