

# EVFG( $\phi 7.2$ )

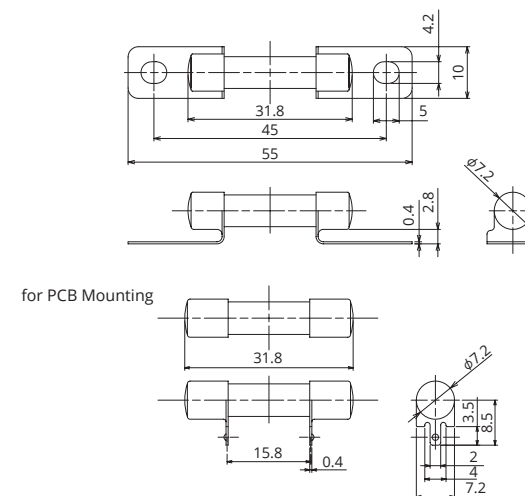
Fuses to protect auxiliary system circuits such as electric compressors and DC/DC converters



## General Specification

Rated Voltage	DC450V
Breaking Capacity	2000A
Operation Temperature	-40°C~100°C
Standard	—
Country of Origin	Japan
Plating	Ni Plating
Standard Packaging	300
Insertion Force	—
Extraction Force	—
Recommended Torque	2.1N±0.2

## Dimensions



## Product Lineup

Ampere Rating(A)	Part Number	Bolt Size	Diameter	Resistance Value	Voltage Drop*1
15	2729	M4	$\phi 7.2$	6.3 m $\Omega$	52 mV
20	2759			3.9 m $\Omega$	41 mV
30	2737			2.5 m $\Omega$	41 mV
30	2728	for PCB Mounting		—	—

\*1 Voltage drop: apply 50% of the rated current.

\*In case a product other than the ones published in this document is desired, please contact us for details.

## Time-Current Characteristic

% of Ampere Rating(A)	Operating Time	
	Min	Max
110%	4hrs.	—
135%	300sec.	3600sec.
200%	5sec.	100sec.
300%	0.5sec.	15sec.
500%	—	1sec.
600%	— (0.05sec.)	— (1sec.)

( ) 2759

\*The fuse characteristic may change depending on the conditions of use.

## Time-Current Characteristic Chart

