

EVFC($\phi 15$)

High Voltage automotive fuses with excellent durability properties

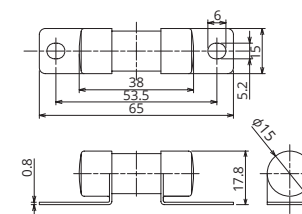
EVF



General Specification

Rated Voltage	DC450V
Breaking Capacity	6000A
Operation Temperature	-40°C~100°C
Standard	—
Country of Origin	Japan
Plating	Ni Plating
Standard Packaging	120
Insertion Force	—
Extraction Force	—
Recommended Torque	4.5N±1.0

Dimensions



Product Lineup

Ampere Rating(A)	Part Number	Bolt Size	Diameter	Resistance Value	Voltage Drop
50	2774	M5	φ15	2.00 mΩ	56 mV
60	2775			1.60 mΩ	57 mV

*In case a product other than the ones published in this document is desired, please contact us for details.

Time-Current Characteristic

% of Ampere Rating(A)	Operating Time	
	Min	Max
110%	4hrs.	—
200%	1sec.	300sec.
300%	0.2sec.	30sec.
500%	0.05sec.	1sec.

*The fuse characteristic may change depending on the conditions of use.

Time-Current Characteristic Chart

