

EVFC($\phi 38$)

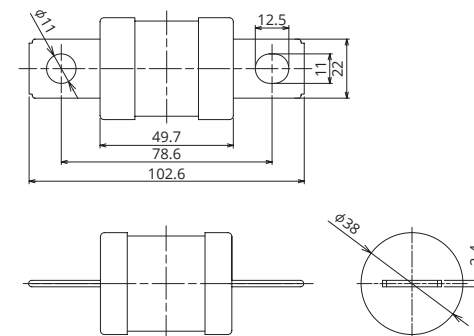
High Voltage automotive fuses with excellent durability properties



General Specification

Rated Voltage	DC450V
Breaking Capacity	6000A
Operation Temperature	-40°C~125°C
Standard	—
Country of Origin	Japan
Plating	Ni Plating
Standard Packaging	40
Insertion Force	—
Extraction Force	—
Recommended Torque	16N±1

Dimensions



Product Lineup

Ampere Rating(A)	Part Number	Bolt Size	Diameter	Resistance Value	Voltage Drop
300	2876	M10	$\phi 38$	0.255 m Ω	125 mV
350	2877			0.195 m Ω	135 mV
400	2878			0.175 m Ω	150 mV

*In case a product other than the ones published in this document is desired, please contact us for details.

Time-Current Characteristic

% of Ampere Rating(A)	Operating Time	
	Min	Max
110%	4hrs.	—
200%	1sec.	300sec.
300%	0.2sec.	30sec.
500%	0.05sec.	1sec.

*The fuse characteristic may change depending on the conditions of use.

Time-Current Characteristic Chart

